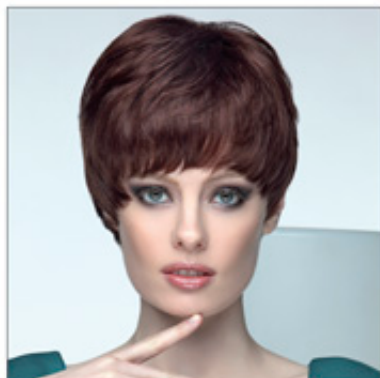




## Extension for hair - SHE HAIR EXTENSION

### SHE'S COLLECTIONS COLLEZIONI SHE



✉ [bbazar@globelife.com](mailto:bbazar@globelife.com)

☎ +39 0331 1706328

### SHE'S COLLECTIONS COLLEZIONI SHE

collections available to customers ranging from the PLATINUM LINE, the tip line is produced entirely by hand in 100% natural hair, the YOUNG LINE, young line characterized by cuts, shapes and trendy colors suitable for a crisp and public who likes to experiment with alternative solutions.

To be counted even the most sober lines and GOLD CLASSIC LINE LINE designed for a woman who does not give up perfection in every circumstance. Choose SHE signifi ca bet at best, maybe entrusted to the loving hands of professionals who know how to identify the right solutions for every need never missing a certain aesthetic gaze turned to the constant innovation in the market.